



*Asia Pacific Superyachts*

7 DAY TRIP  
BALI TO KOMODO

By APS Indonesia

# Asia Pacific Superyachts

## LOGISTICS AND TRIP PLAN

### GUEST TRIP KOMODO NATIONAL PARK BALI INDONESIA

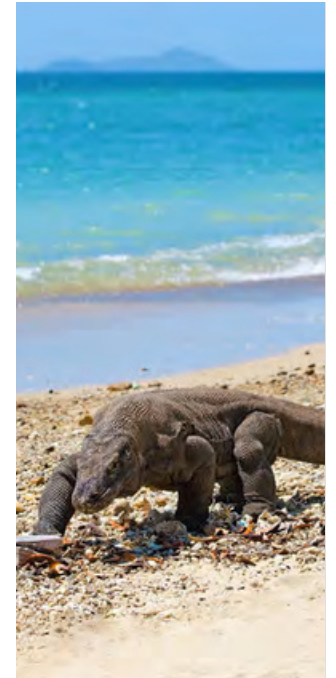
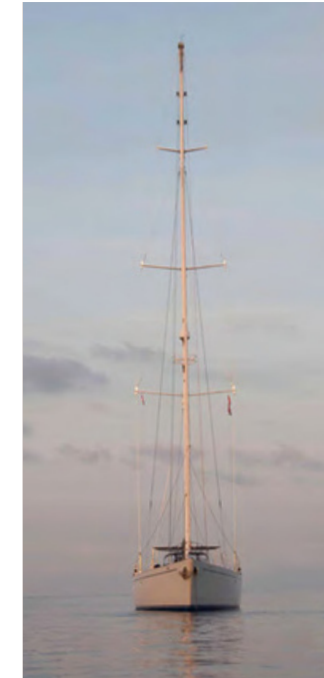
THOMAS TAATJES

Asia Pacific Superyachts Indonesia  
E: [thomas@asia-pacific-superyachts.com](mailto:thomas@asia-pacific-superyachts.com)  
M: +62 811 3981 878

#### INFO

[www.asia-pacific-superyachts.com](http://www.asia-pacific-superyachts.com)

*© Asia Pacific Superyachts Indonesia This document may not be published or reproduced without prior permission*





**SECTION 1: TRIP ITINERARY  
PROGRAM OVERVIEW**



Bena Harbour

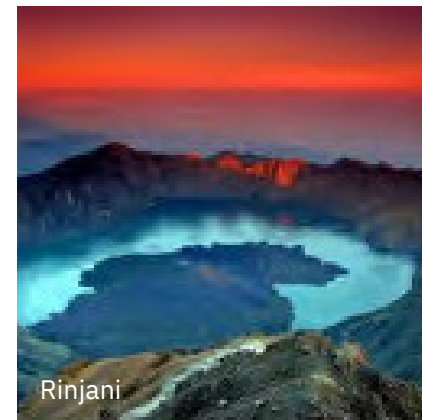
## BALI: THE ADVENTURE BEGINS

### Day 1: Bali to Moyo

Bali, Island of the Gods. The Gods must have been asleep when they made facilities for superyachts! The 3 berth stern-to operated by ourselves and IMS in Bena is the best available space ( 8°44.790'S 115°12.677'E) - near to the airport for guests (via toll road) and provides water, generators (on request) and a secure position. For more information see here: [www.indonesianmarineservices.com/dockage/](http://www.indonesianmarineservices.com/dockage/) Asia Pacific Superyachts will do all the clearances, fueling, provisions etc here prior to guest arrival. Once done, head East to Moyo to standby for guest arrival. Guest arrival into Ngurah Rai airport DPS will be VIP cleared through airport, picked up and delivered to the waiting yacht in Bena.

### Alternative:

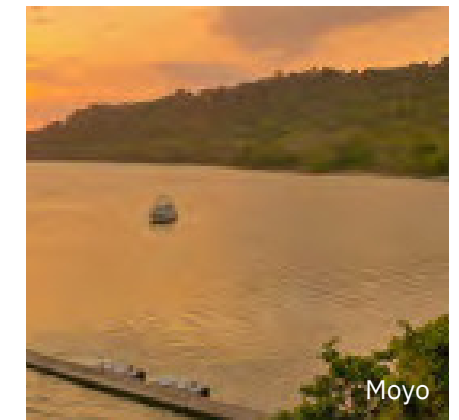
We could look at stopping at the Gili islands after Bali departure. Here are three almost identical islands with differing levels of development. Gili T is the most developed with a backpacker scene, learn to dive and restaurants and nightlife aplenty. Gili Meno is the quiet and Gili Aier is a nice mix of the two. We would recommend Gili Aier and it also has the best anchorage being the most out of the currents of the Lombok straight. Anchorage to the east of Gili Aier and tender runs into the sandy patch on the South East of the island. Good snorkeling and beachside restaurants and bars. Snorkeling is good and lots of turtles. Depending on guest preferences to the beach restaurant scene we can stay here a night or keep going to Moyo. Diving is better as we head east.



Rinjani



Gili Islands



Moyo

**Day 2: Moyo & Satonda**

This beautiful nature reserve is located off the NW tip of Sumbawa. It provides a great anchorage as well as wonderful snorkeling and land activity. As you approach you see a jetty and then, set in the jungle, almost camouflaged, are 20 white luxury tents – Amanwana resort (<http://www.amanresorts.com/amanwana/home.aspx>) We can spend half a day in Moyo – snorkeling/diving/ beach. We can use Aman resort facilities if required (charged for of course) and can organize land tours to a beautiful waterfall through them. They have a very nice restaurant for lunch too before we move to Satonda where we can visit crater lake, Beach & snorkeling. Enjoy the fruitbats taking off in search of food at sunset, flying right over the boat before we continue east overnight.

**Day 3: Morning: North Sangeang**

Sangeang is a beautiful, round volcanic island. It was evacuated during it's last major eruption in 1982 and remains active today. Fringed by black sand beaches you can explore on foot, or snorkel/ dive on beautiful colourful coral reefs and volcanic bubble field. If you get cold underwater you can warm your hands in the thermal vents, hot enough to cook an egg in 5 minutes!

Afternoon: Banta Island

Banta island lies just outside the Komodo National Park yet is arguably as beautiful. Several semi circular bays offer great protected anchorages perfect for water sports. The diving is outstanding, from current swept submerged reefs to one of the best night dives on the trip. There is also an easy 30 minute hill climb for a spectacular sunset vista back into the bay.





Padar Island

#### Day 4: North Komodo

Spend the morning diving /beach/ snorkeling and, of course, looking at/out for dragons!! The bay at Batu Moncho is secluded and protected with beautiful reefs and beaches.

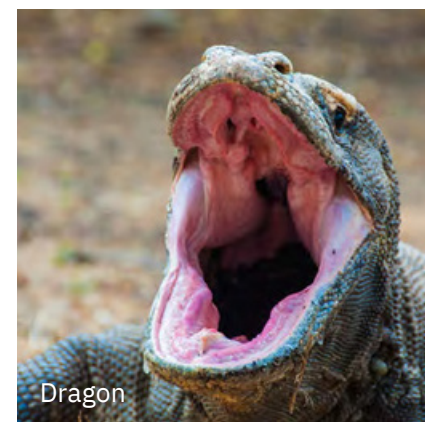
The offshore island of Gili Lawalaut is the launch point for some of the fishiest diving in the area. Current swept reefs are home to different species of pelagic fish and sharks which have benefitted from the protection of the area since it was made a World Heritage Site in 1980.

Good diving spots scattered around here and a very nice trek to a spectacular viewpoint up the hill. The boat can then head a bit south and visit the manta rays at Makassar reef ( 8°32'42.14"S, 119°35'54.17"E). Can sometimes get busy with day boats. Good day anchorage and sand island for beach setup on the western side of the reef at: 8°32'51.52"S, 119°35'15.00"E.

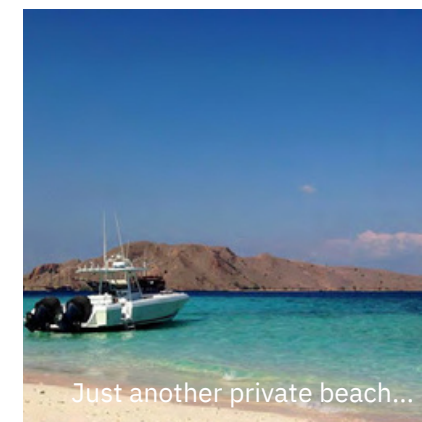
#### Day 5: Dragon Trekking in Rinca and evening Pink Beach in Padar

We meet our local trekking guide at the ranger station in Loh Buaya, north Rinca. Depending on the wishes of the guests we can walk for 30 minutes, 2 hours or half a day to a hilltop viewpoint. Keep your eyes peeled for buffalo, deer, birdlife and of course the Komodo Dragons. These prehistoric reptiles have recently been identified as the largest venomous animal on the planet. Stay as a group and respect the rules of the National Park!

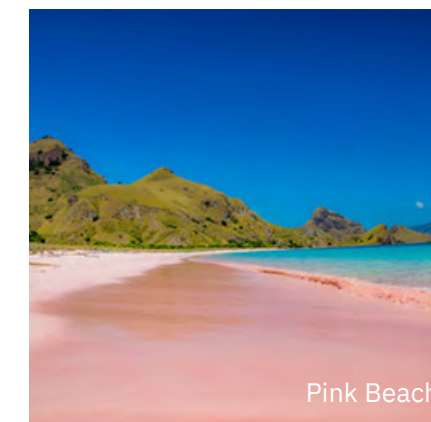
Relocate the boat over lunch to the natural harbour of Padar. The dragon population was driven off by a wildfire decades ago, so Padar offers safe unaccompanied walking. From the eastern bay it is a gentle 20 minute walk over the hill to the west side of the island. Look out for huge herds of deer and enjoy the view to the west. A beautiful pink beach – much bigger and less visited than its famous cousin on Komodo island itself, provisions can be brought around by tender for the perfect late afternoon / sunset.



Dragon



Just another private beach...



Pink Beach

**Day 6: South Komodo and South Rinca**

Spend the morning in Loh Sera – another beautiful sandy bay, just around the corner from the world class Manta Alley diving/snorkeling spot. Get up close and personal with these gentle giants of the ocean as they filter the rich, cool planktonic waters with gaping mouths.

Relocate over lunch to the picturesque Horseshoe Bay in South Rinca and watch the Komodo Dragons come right down to the ocean in the afternoon cool. Nesting sea eagles display their fishing prowess, and keen divers braving the cool water will be rewarded with the richest reefs and the coolest critters of the trip!

Overnight Run to Labuan Bajo for **Day 7** departure.

If **Day 8** is departure day, there is much more to see and do. We have barely scratched the surface of the diving on offer in the north section of the park. The tribal villages of South Flores offer a unique glimpse of isolated culture and customs. This itinerary option

would allow for an extra day in any one location according to your guests preferences.

If time permits we head North by road to see a tribal Caci dance – a spectacular warrior dance unique to Flores.

Or, we can spend more time in the park. It is recommended that the guests fly out of Labuan Bajo as to maximize the time on the trip and not repeat the return legs to Bali.

Drop guests to Labuan Bajo Airport in the morning.

From here, 2 options:

Private Jet:

Labuan Bajo (1400m runway). However, we cannot clear the country from here so would have to fly back to Bali, clear out and then proceed home from there.

Commercial:

If the above is unnecessarily costly and difficult, we can fly either commercial or charter from Labuan Bajo back to Bali where we meet the private jet or onward International flight.



## SUMMARY

We hope this overview provides a clearer picture of the options available and the amazing experience that Indonesia offers. We will have some time on arrival to fine tune and run through this with some charts to get a clear picture. Our main job as agents in this part of the world is providing logistical and technical support to our clients and as such, we expect to be on call 24/7 and to be very hands on. Indonesia is a very hands-on environment and most things have to be done face-to-face to gain any kind of favorable result. This trip is designed to give you a taste of many of the adventures available. Hope all the above maps out the bones of the next few weeks and we look forward to the Indonesian adventures to come!





A vibrant underwater scene featuring a clownfish with orange and white stripes swimming through the tentacles of a large sea anemone. The anemone's tentacles are a mix of orange and red, and the water has a blue-green tint. A semi-transparent dark grey box is overlaid in the center of the image, containing white text.

# Asia Pacific Superyachts

THOMAS TAATJES

Asia Pacific Superyachts Indonesia

E: [thomas@asia-pacific-superyachts.com](mailto:thomas@asia-pacific-superyachts.com)

M: +62 811 3981 878

W: [www.asia-pacific-superyachts.com](http://www.asia-pacific-superyachts.com)